

INDUSTRIAL | Build-to-Suit Opportunity



## HUNTSVILLE WEST INDUSTRIAL PARK

Multiple Build-to-Suit Opportunities - Available For Sale or Lease

**ADDRESS:**

*DISTRIBUTION BLVD. NW  
HUNTSVILLE, ALABAMA 35756*

**FULLER MCCLENDON**

256-428-0404

[fmccleendon@triadproperties.com](mailto:fmccleendon@triadproperties.com)

**JOE MOSELEY**

256-714-9452

[jmoseley@triadproperties.com](mailto:jmoseley@triadproperties.com)

# HUNTSVILLE WEST

DISTRIBUTION BLVD. NW, HUNTSVILLE, ALABAMA



## PROPERTY OVERVIEW

Huntsville West is a Class-A industrial park consisting of 92 acres of developable industrial land. Owner will Build-to-Suite for sale or lease.

The site is conveniently located on Distribution Blvd. NW and is accessible from Greenbrier Parkway. Full city and utility service available, along with flexible building and development options.

Huntsville West is adjacent to the Amazon Fulfillment Center, Vuteq, across the Parkway from Polaris, and less than a mile from Mazda-Toyota's 3.7 million square foot production facility. Huntsville West is located 1.5 mile from I-565, allowing its occupants to be at the Huntsville International Airport, Cummings Research Park, Redstone Arsenal, the International Intermodal Center, or I-65 in a few short minutes.

## GENERAL INFORMATION

PROPERTY TYPE	LAND
ZONING	COMMERCIAL INDUSTRIAL PARK
JURISDICTION	CITY OF HUNTSVILLE, AL
COUNTY	LIMESTONE
SITE ACREAGE	92 ACRES

## TRANSPORTATION

NEAREST INTERSTATE	I-565: 1.5 MILES, I-65: 5 MILES
HUNTSVILLE INT'L AIRPORT (HSV)	7.5 MILES
PORT OF DECATUR	10.9 MILES



# HUNTSVILLE WEST

DISTRIBUTION BLVD. NW, HUNTSVILLE, ALABAMA



## LOCATION



# HUNTSVILLE WEST

DISTRIBUTION BLVD. NW, HUNTSVILLE, ALABAMA



## MASTER SITE PLAN

With the exception of Buildings 100 & 200 (EXISTING BUILDINGS), the image below depicts an example of how the future site could be developed. Build-to-Suit opportunities are outlined in RED.

1,209,650

Total Proposed Buildings SF

92

Acre Land Site

BTS

Build-to-Suit

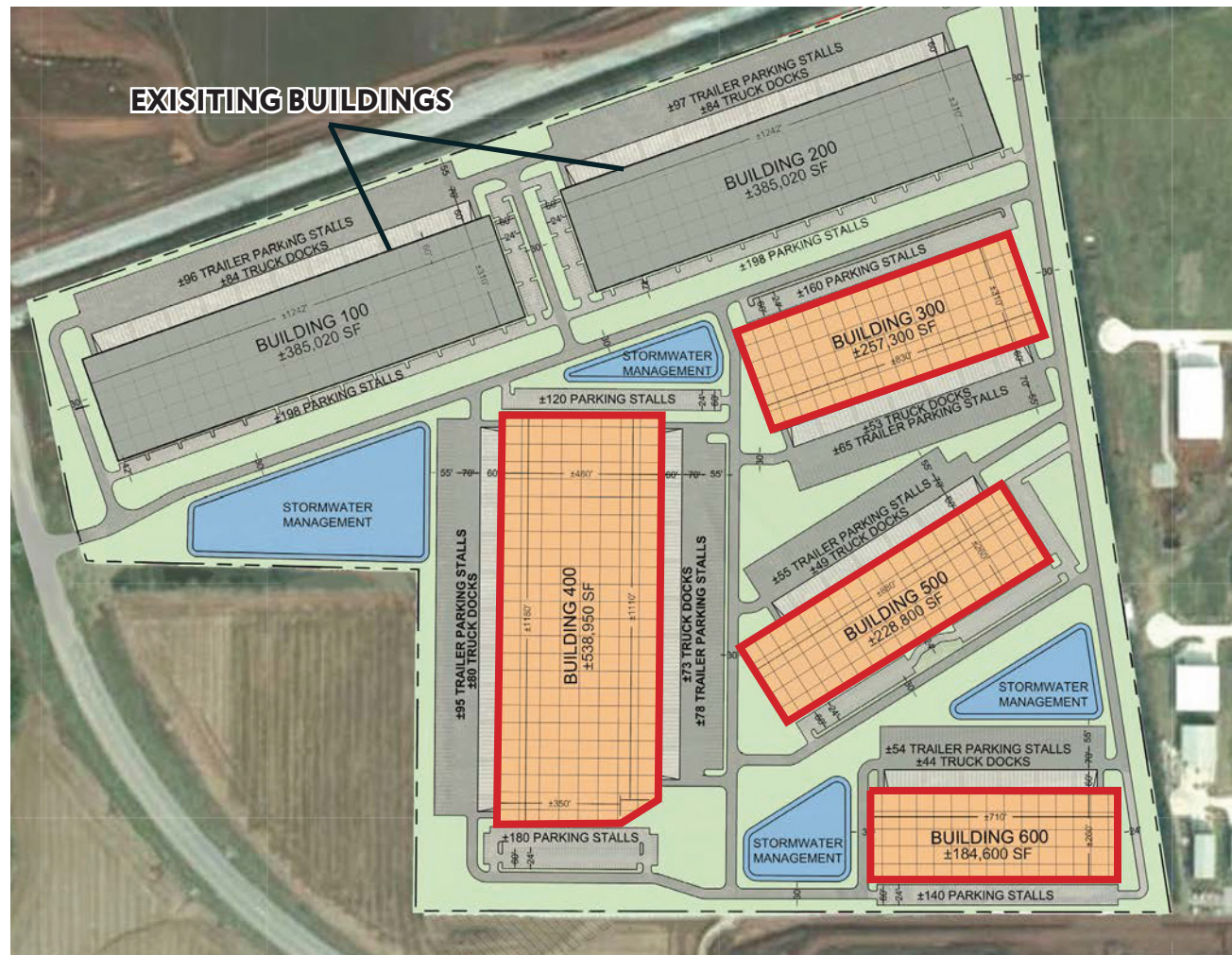
For Sale or Leaseback

BUILDING 300: +/- 257,300 SF

BUILDING 400: +/- 538,950 SF

BUILDING 500: +/- 228,800 SF

BUILDING 600: +/- 184,600 SF





SITE

**FOR MORE INFORMATION:**

**JOE MOSELEY**

256-714-9452

[jmoseley@triadproperties.com](mailto:jmoseley@triadproperties.com)

**FULLER MCCLENDON**

256-428-0404

[fmcclendon@triadproperties.com](mailto:fmcclendon@triadproperties.com)

Although Broker has used reasonable care in obtaining this data, this material is submitted without representation or warranty, express or implied. All information is subject to change by the owner prior to sale or lease.

IGTEC



TRIAD PROPERTIES CORPORATION  
100 CHURCH STREET SW, SUITE 200  
HUNTSVILLE, ALABAMA 35801  
[WWW.TRIADPROPERTIES.COM](http://WWW.TRIADPROPERTIES.COM)