



3,500-10,002 SF FIRST CLASS OFFICE SPACE FOR LEASE

3501 MEMORIAL PKWY SW
HUNTSVILLE, ALABAMA 35801



PROPERTY OVERVIEW

Triad Properties Corporation is pleased to present the opportunity to lease Huntsville Laser Center Building, a Class “A”, four (4) story office and medical office building off the highly active Memorial Parkway. This building features beautiful architecture and landscaping, high visibility, and tenant allowance based on term. The location is proximate to Crestwood Medical Center (1.1 miles), Huntsville Hospital (2.1 miles), Piedmont Point Shopping Center (1.4 miles), Downtown Huntsville and many other hotels, restaurants, entertainment and shopping options.

PROPERTY DETAILS

LOCATION	3501 Memorial Pkwy SW, Suite 300 Huntsville, Alabama 35806
TOTAL SIZE	10,002 SF
FLOORS	Three (3) Story
SURFACE PARKING SPACES	88 parking spaces



HUNTSVILLE LASER CENTER

3501 MEMORIAL PKWY SW | HUNTSVILLE, ALABAMA 35801

LOCATION



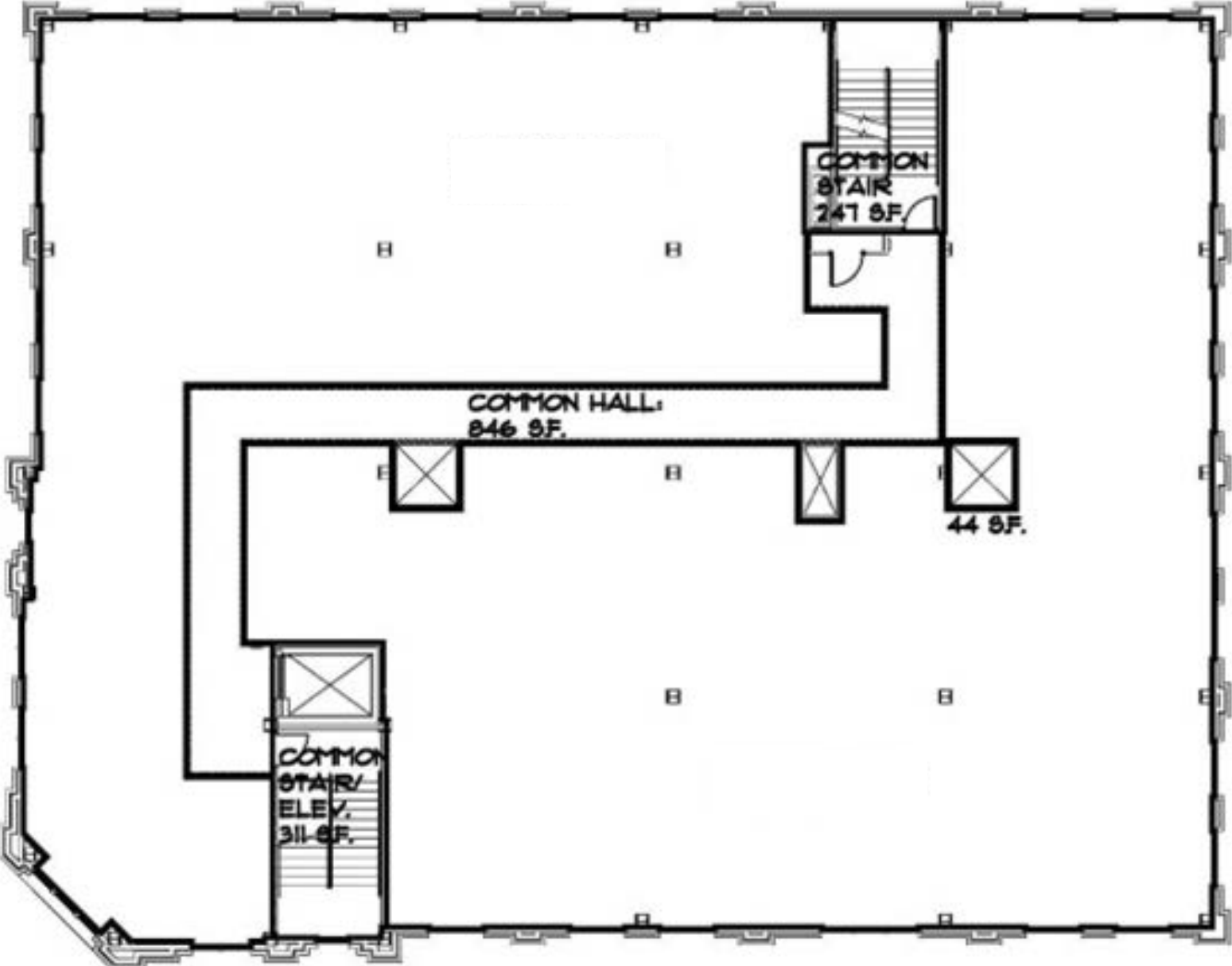
HUNTSVILLE LASER CENTER

3501 MEMORIAL PKWY SW | HUNTSVILLE, ALABAMA 35801

FLOOR PLAN

SUITE 300

10,002 SF





**FOR MORE INFORMATION,
PLEASE CONTACT:**

JOE MOSELEY

256.428.0403

jmoseley@triadproperties.com

Although Broker has used reasonable care in obtaining this data, this material is submitted without representation or warranty, express or implied. All information is subject to change by the owner prior to sale or lease.

TRIAD
PROPERTIES

TRIAD PROPERTIES CORPORATION
100 CHURCH STREET, SUITE 200
HUNTSVILLE, ALABAMA 35801
WWW.TRIADPROPERTIES.COM