

2000 Bob Wade Lane
HUNTSVILLE, AL 35810

AVAILABLE

SUITE: 100

SIZE: 20,000 SF



Industrial/Office Space Available

LOCATION

2000 Bob Wade Lane
Huntsville, AL 35810

SIZE

Kendall Industrial Park - Total 360,000 SF
Available Space - Suite 100: 20,000 SF

ABOUT THE PROPERTY

2000 Bob Wade Lane is an industrial property located near the intersection of Highway 255 and Pulaski Pike NW in Huntsville, AL. This site is within a major industrial area and near Toyota Motor Manufacturing and Meta's datacenter. It includes easy access to Highway 255 and connections to Highway 53—one of the city's main thoroughfares.

PROPERTY HIGHLIGHTS

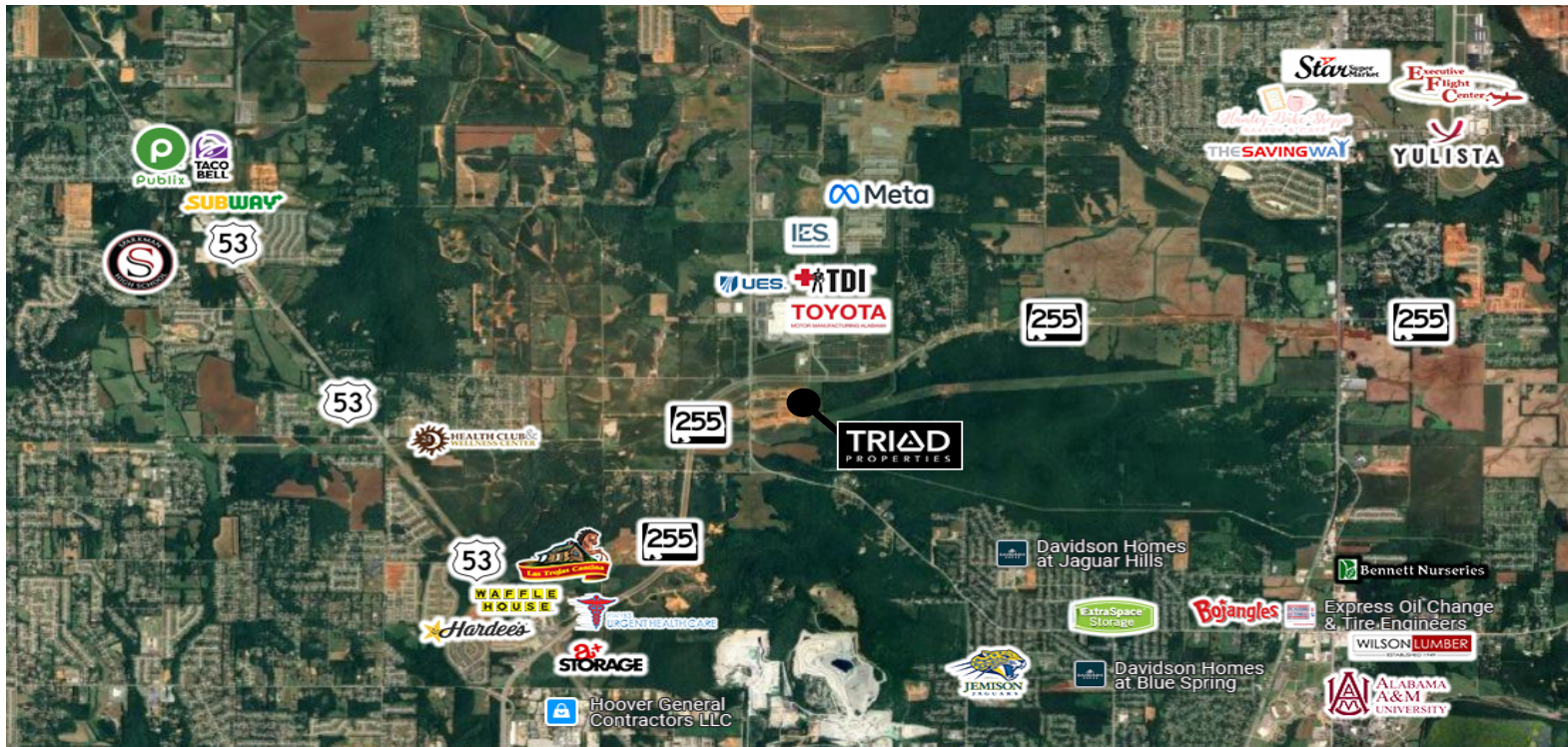
- Slab 6 inch 4000 PSI
- Center column
- Eave height 31'x27'
- Sprinkler EFSR
- 16 Ground Level
- (12'x14') doors
- 400 AMP 3 Phase 277/480
- LED Lighting
- Gas heat
- Can be climate control
- Parking in front and back



JOHN KENDALL
(256) 684-9858
jkendall@triadproperties.com

2000 Bob Wade Lane
HUNTSVILLE, AL 35810

LOCATION



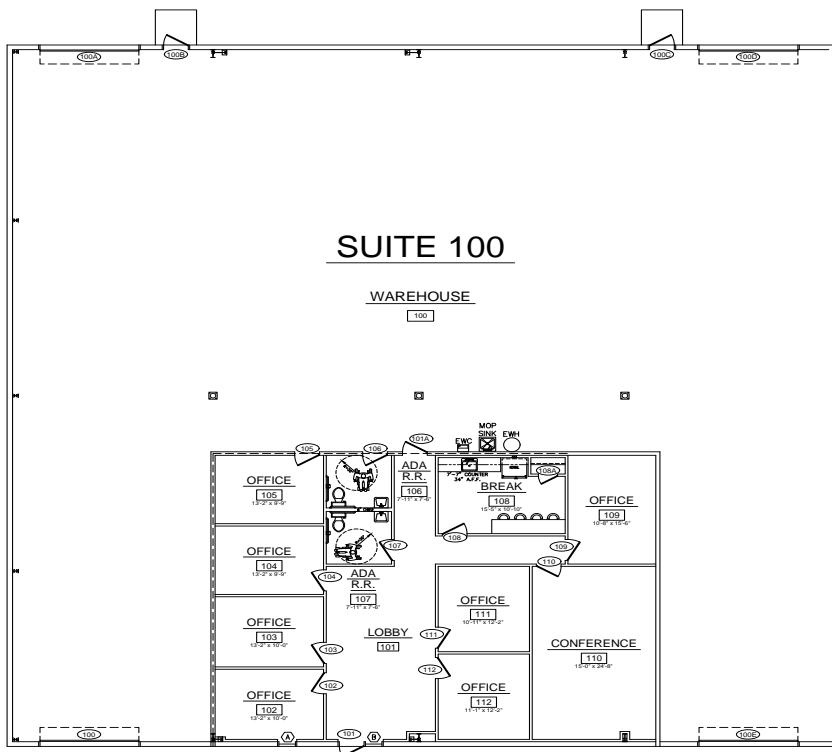
Floor Plan

Suite 100

SUITE 100

WAREHOUSE

100



AVAILABLE SPACE HIGHLIGHTS

- Floor: 1st
- Size: 20,000 SF
- Term: Negotiable
- Condition: Full Build-Out
- Available: Immediately